



# Martin Staub

Arranger, Composer, Director, Interpreter, Teacher

United States (USA), Millsboro

## About the artist

Martin is a retired music teacher, composer (member of ASCAP) and church musician (member of AGO). His compositions are mostly sacred music, solo piano, brass, and organ. He has been a professional musician nearly all his life and is still an active composer, performer, teacher, organist and choir director. Currently he is the music director of Grace Lutheran Church, LaPlata, MD and is a member of the Rehoboth, DE Concert Band where he plays euphonium. He and his wife have been married for 49 years and have two children and 4 grandchildren.

**Qualification:** 4 to 6

**Associate:** ASCAP

## About the piece



**Title:** Mimi's Music Box

**Composer:** Staub, Martin

**Licence:** Copyright © Martin Staub

**Instrumentation:** Keyboard (piano, harpsichord or organ)

**Style:** Traditional

**Comment:** Mimi's Music Box is a nice little recital piece, effectively played on piano or on a keyboard with a music box voicing. You can experiment on your keyboards with other voicings.

## Martin Staub on [free-scores.com](http://www.free-scores.com)

<http://www.free-scores.com/Download-PDF-Sheet-Music-martin-staub.htm>

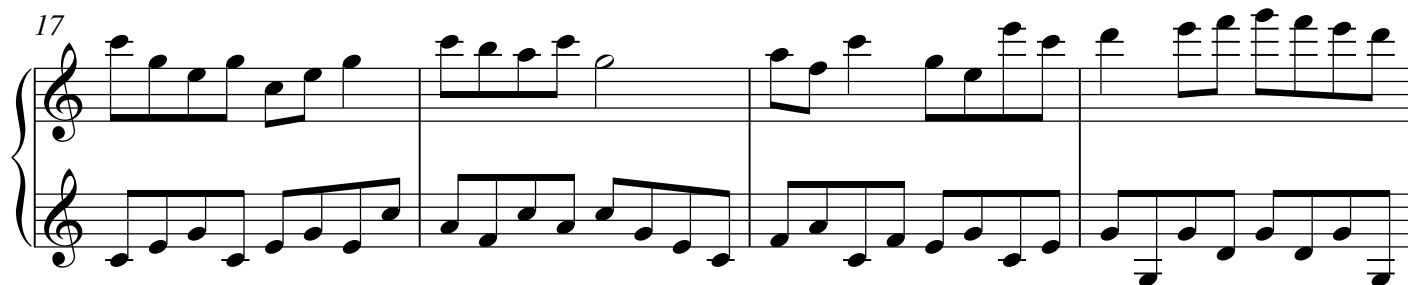
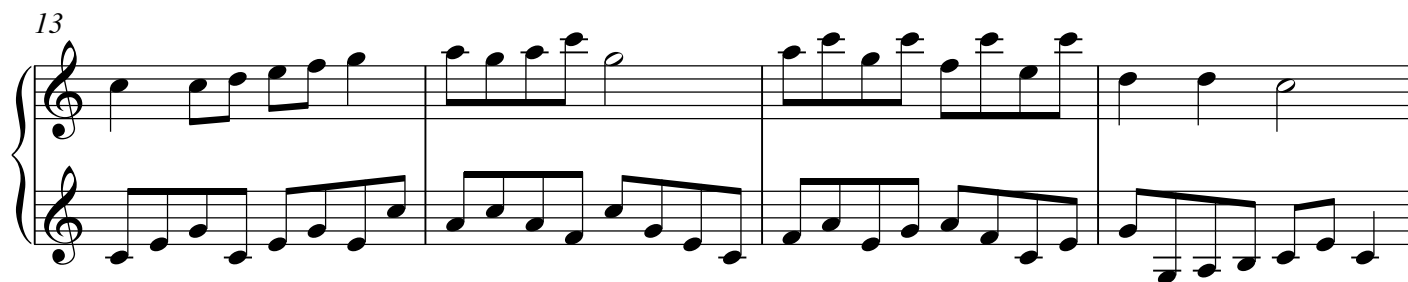
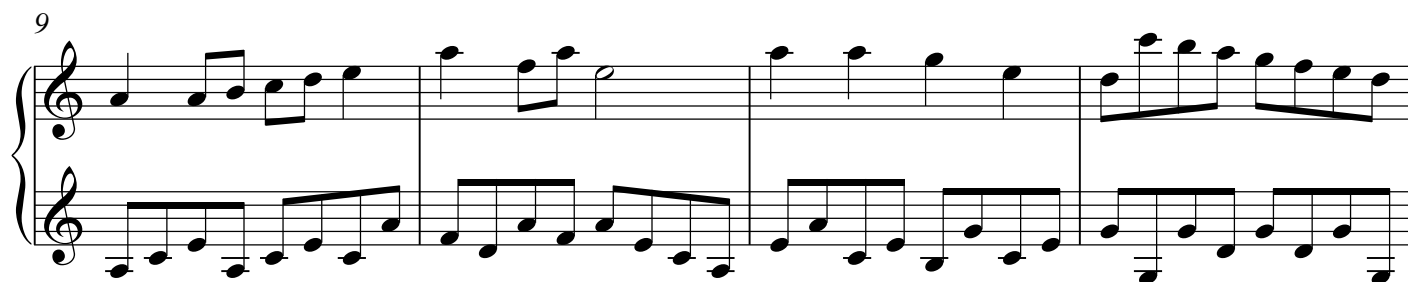
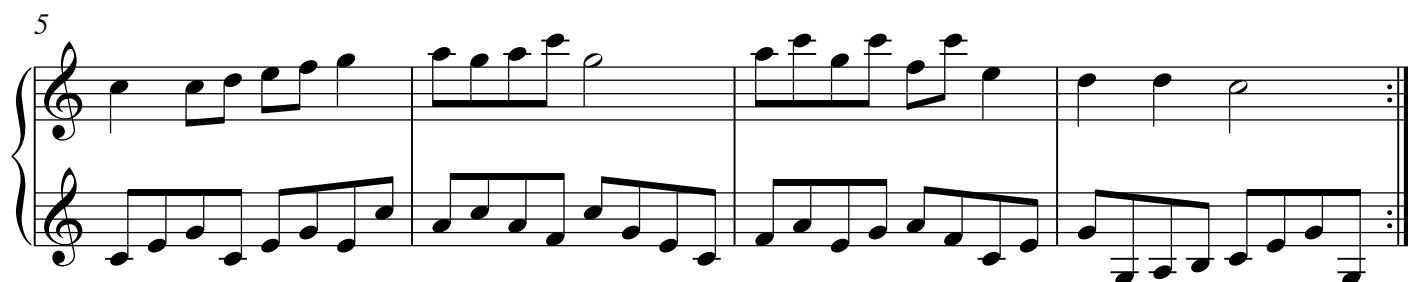
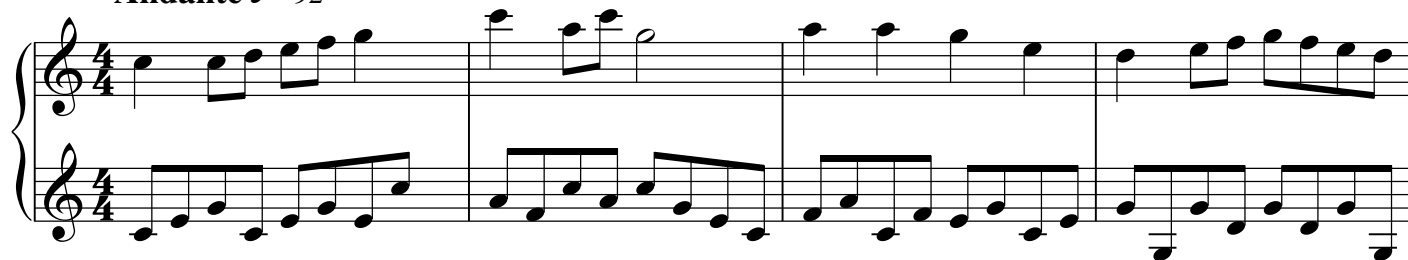
- Contact the artist
- Write feedback comments
- Share your MP3 recording
- Web page and online audio access with QR Code :



*To my wife, Joyce*  
**Mimi's Music Box**

Martin Staub (ASCAP)

**Andante** ♩ = 92



Copyright © 2010

[free-scores.com](http://free-scores.com)

21

Measures 21-24 of a musical score in D major. The right hand features a melodic line with eighth and sixteenth notes, including a trill in measure 24. The left hand provides a steady accompaniment of eighth notes. The system concludes with a double bar line and repeat signs.

25

Measures 25-28 of a musical score in D major. The right hand continues the melodic development with eighth notes and a half note. The left hand maintains the eighth-note accompaniment. The system ends with a double bar line and repeat signs.

29

Measures 29-32 of a musical score in D major. The right hand features a melodic line with eighth notes and a half note. The left hand continues the eighth-note accompaniment. The system concludes with a double bar line and repeat signs.

33

Measures 33-36 of a musical score in D major. The right hand features a melodic line with eighth notes and a half note. The left hand continues the eighth-note accompaniment. The system concludes with a double bar line and repeat signs.

37

Measures 37-40 of a musical score in D major. The right hand features a melodic line with eighth notes and a half note. The left hand continues the eighth-note accompaniment. The system concludes with a double bar line and repeat signs.