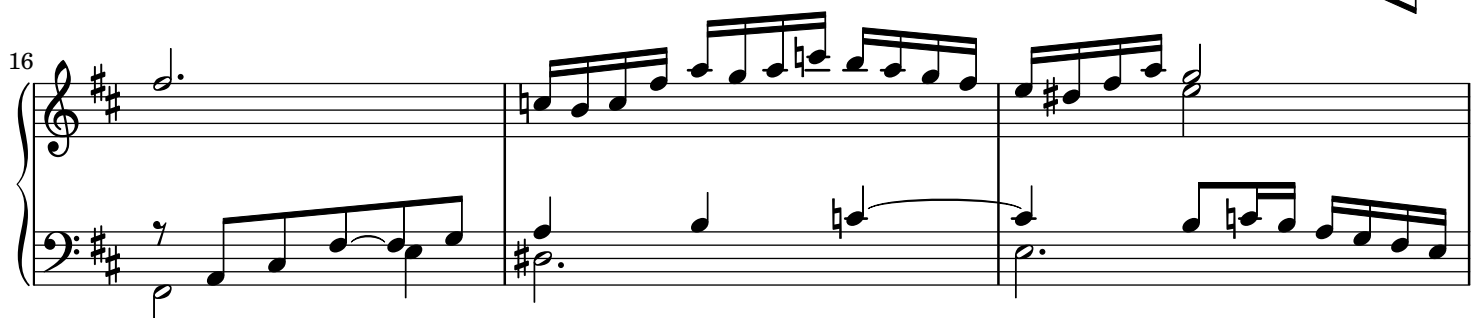
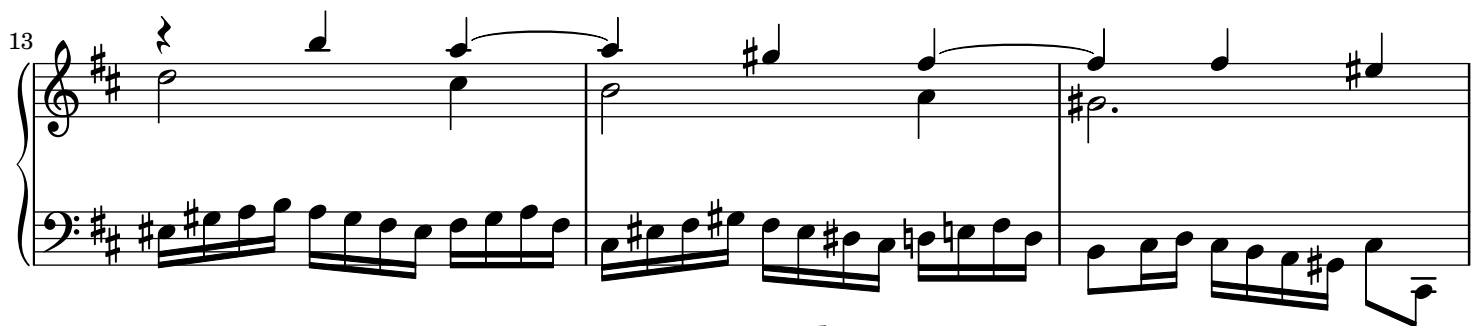
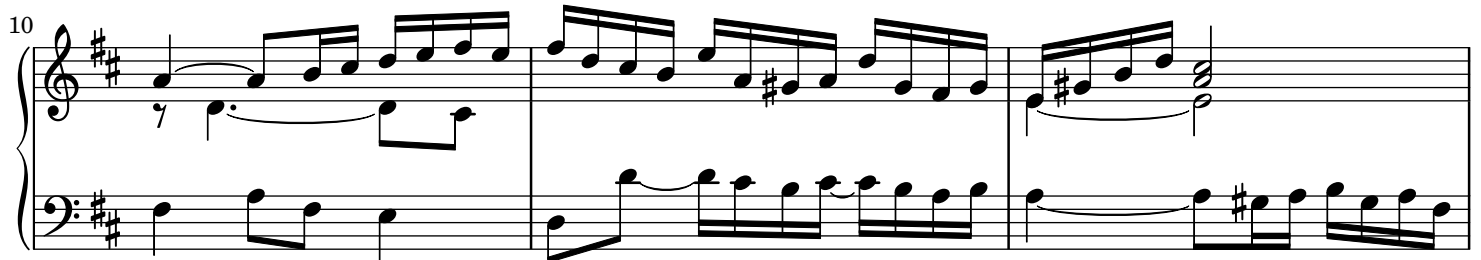
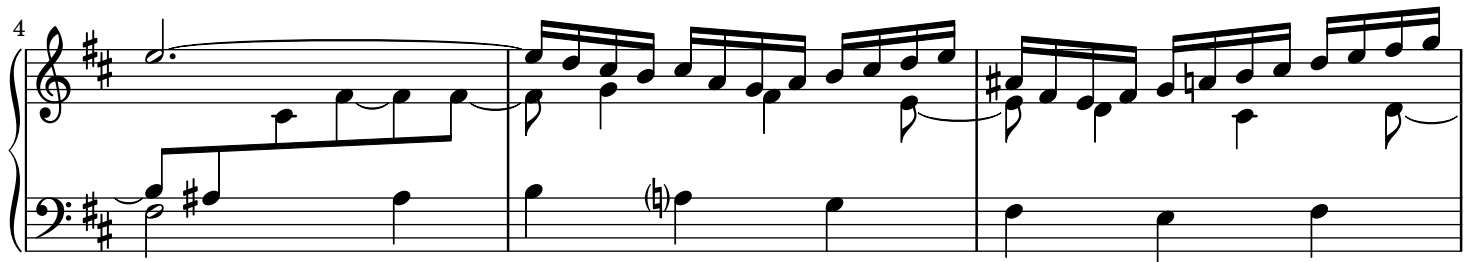
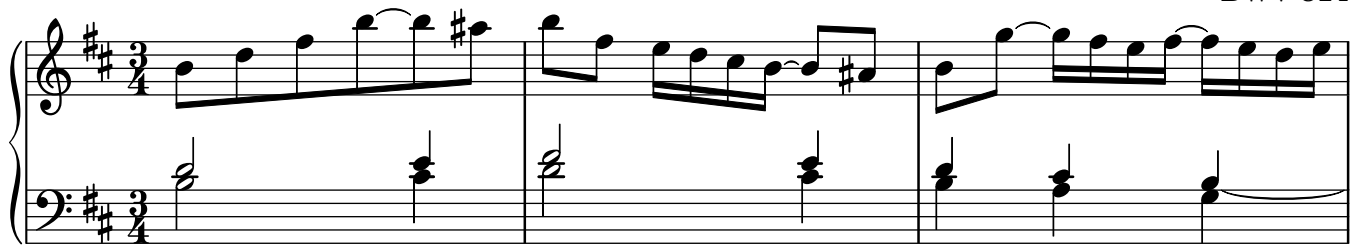


Sarabande

J. S. Bach (1685-1750)
BWV 814



19



22

Musical score for 'The Rose Tree' (Meisterlied). The score is in G major (one sharp) and 3/4 time. It consists of three measures. The first measure shows the piano introduction with a treble clef and a bass clef. The second measure continues the melody. The third measure shows the vocal entry with a treble clef and a bass clef. The score ends with a double bar line and repeat dots.